



# Giscome School Plan for Success 2021/2022

*"It's Small, It's Rural, It's Family"*

## Our School

Giscome Elementary School is nestled in a lovely geographical location a few kilometers away from Eaglet Lake, approximately 40 kms, from Prince George. Students attending Giscome Elementary come from the communities of Willow River, Giscome, Upper Fraser, and Sinclair Mills. While some students live in the townships, many live in the surrounding rural area of these four communities.

Giscome has two modular classrooms and the building of the Eastline Center has allowed the addition of a library and small gym. Currently, Giscome enrolls between 30-35 students, K-3 and 4-7. Multi-grade learning environments offer opportunities for students to explore complex problem solving and critical thinking in a collaborative setting.

## Mission

To inspire all learners to reach their full potential and to enrich future generations.

## Vision

A supportive, creative, and innovative community of learners.

## Values

Community  
Collaboration  
Personal Responsibility  
Growth Mindset

# Giscome Elementary SPSS 2021/22



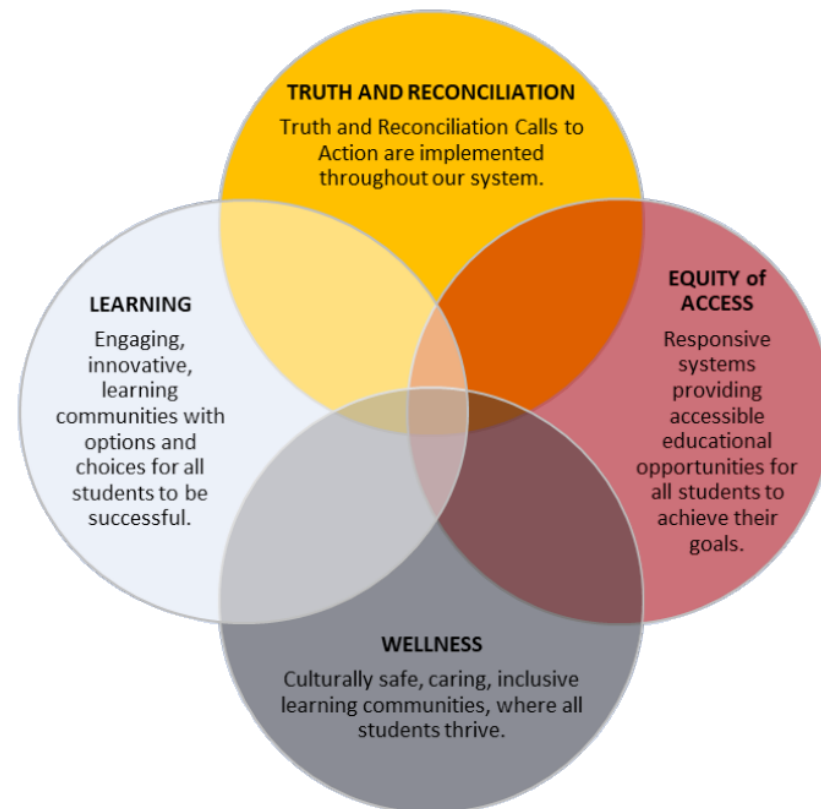
We respectfully acknowledge the unceded ancestral lands of the Lheidli T'enneh, on whose land we live, work and play.

**“When you acknowledge the land, you are making a commitment to the day. The commitment and agreement to honour and respect each other and your environment.”**

**~Dr. Dustin Louie**

## District Directions

School District No. 57 has identified 4 district directions that set our priorities for the next 5 years. These directions will guide our work.



# Giscome Elementary SPSS 2021/22

## Truth and Reconciliation

Truth and Reconciliation Calls to Action are implemented throughout our system.

### Goal:

Ensure staff and students are working to honour and implement Indigenous ways of knowing and being in our school and community.

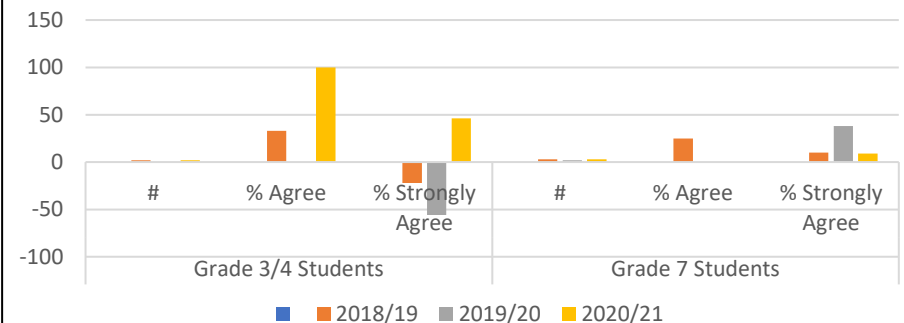
### Strategies

- Increase the knowledge and engagement of First Peoples Principles of Learning in curricular implementation.
- Create indigenous spaces (indoor and outdoor), where students, staff and local communities can gather and learn.
- Increase the knowledge and use of the Dakelh language in the school – word of the week, introductions, identify areas of the school
- Provide professional learning to staff and students about Truth and Reconciliation Calls to Action
- Invite indigenous performers, Patricia Lunden to teach drumming, visit a local trapline, and Elders in the nearest community.
- Staff and class discussions about Truth and Reconciliation Calls to Action to promote knowledge and understanding.
- Capture cultural experiences through a visual data collection.

### Success Measures

- Student Learning Survey administered at grades 4 and 7 to measure the % of students identifying that they are learning about Indigenous content in schools.
- Create a record of the Dakelh language learned in the school over the course of the year.
- Apply for an Indigenous Learning Team Grant to continue developing the outdoor learning and gathering space.

Percentage of students in grades 3, 4 and 7 learning about Aboriginal Peoples in Canada.



# Giscome Elementary SPSS 2021/22

## Equity of Access

Responsive systems providing accessible educational opportunities for all students to achieve their goals.

### Goal:

To create the conditions where all students have access to supports to improve their learning.

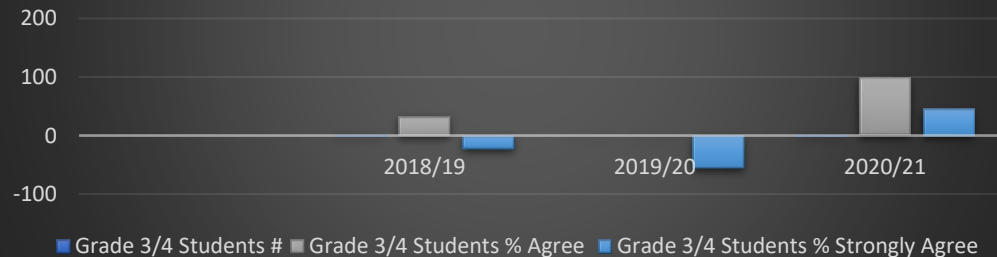
### Strategies

- Increased support from local food banks and charitable organizations.
- Increased engagement with SOGI resources and invite SOGI representatives to support and mentor staff.
- Increased engagement with appropriate Indigenous resources and increased Elder and Knowledge Holders involvement to support and mentor staff in the education of Indigenous cultures.
- Increase our communication with students and families while developing personalized learning supports to remove barriers for their success

### Success Measures

- Our Student Learning Surveys for our Grades 4 and 7 students help us identify a sense of belonging for our students. When students are connected and feel like they belong, they are successful.
- Parent conferences to discuss personal learning supports.

Percentage of Grade 3/4 students who can get the help they need from adults at their school.



# Giscome Elementary SPSS 2021/22

## Wellness

Culturally safe, caring, inclusive learning communities, where all students thrive.

### Goal:

To create a space where individuals feel safe to discuss, reflect, and problem solve in a respectful manner.

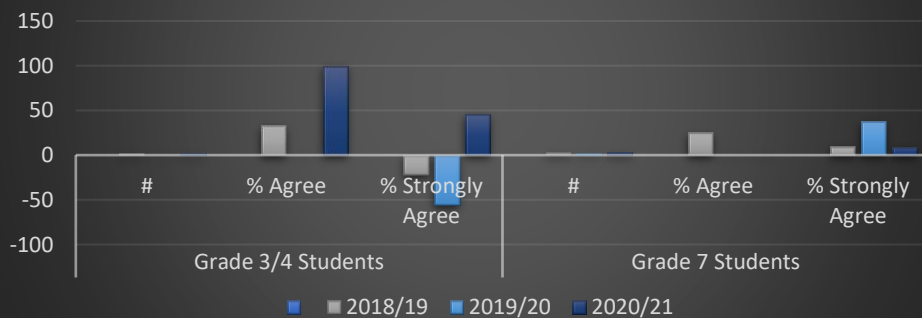
### Strategies

- Provide opportunities for Sharing and Restorative Circles for staff, students, and the community.
- Participate in groups to foster growth and skill development in self-regulation, peer relationships, and conflict resolution.

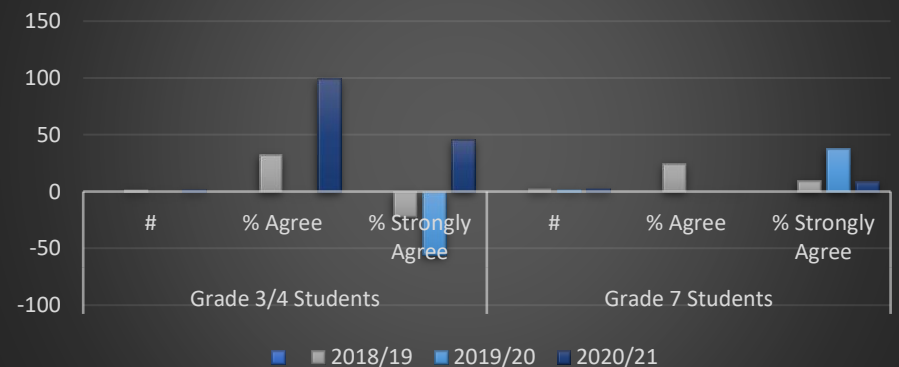
### Success Measures

- Monitoring student and staff engagement through a monthly survey.

Percentage of students learning how to solve problems in peaceful ways.



Percentage of students who feel safe at school.



# Giscome Elementary SPSS 2021/22

## Learning

We will work to achieve engaging, innovative, learning communities with options and choice for all students to be successful.

### Goal: Literacy

**Increase reading and comprehension rates for all students.**

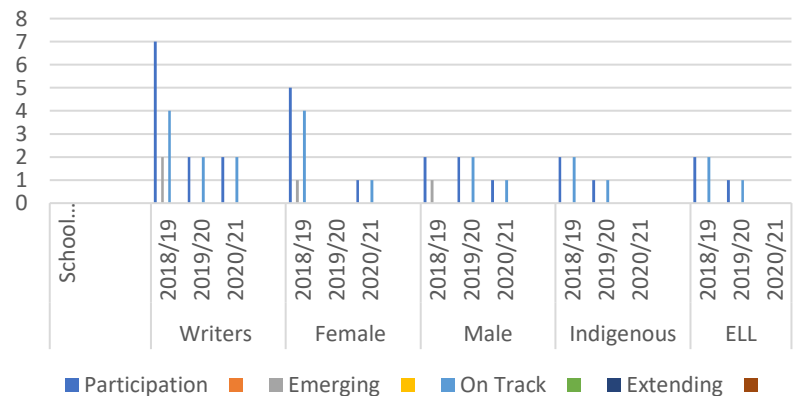
### Strategies

- Increase use of formative assessments to inform practice and provide appropriate next steps in learning.
- Increased use of Fountas and Pinnell Levelled Literacy Intervention
- Participate in the Rural Schools Literacy Project

### Success Measures

- Increased performance demonstrated from the Fountas and Pinnell Benchmark Assessment System – three times/year.
- Increased performance demonstrated from the Foundation Skills Assessment – Grades 4 and 7.

Grade 4 Reading - FSA



Grade 7 Reading - FSA

