



Harwin Elementary

School Plan for Student Success

2022/2023

Be Part of the Pride

Our School

Harwin Elementary School resides on the unceded ancestral land of the Lheidli T'enneh. Bordered to the north by the beautiful Nechako River, Harwin's catchment is home to numerous parks, green spaces, and community partners.

Currently, Harwin has 280 students enrolled in 12 divisions and 42 staff members who are committed to promote student success. Our StrongStart program is a source of pride as it offers our community of young learners the opportunity to explore, play, and build relationships in a safe and caring environment. The Spirit Den offers extensive afterschool programming to help students develop their interests while building life skills.

Harwin Elementary is committed to providing a positive learning experience, while developing a supportive, creative, and an innovative community of learners.

Vision

All students are equipped with the necessary academic and social-emotional skills to succeed on their learning journey in a safe and caring environment.

Mission

To identify and eliminate colonial practices that create barriers for our learners and create an innovative and caring school where relationships and student wellness are at the forefront.

Values

Connections
Opportunities for All
Community
First Peoples Principal of Learning

Harwin Elementary SPSS 2022/23



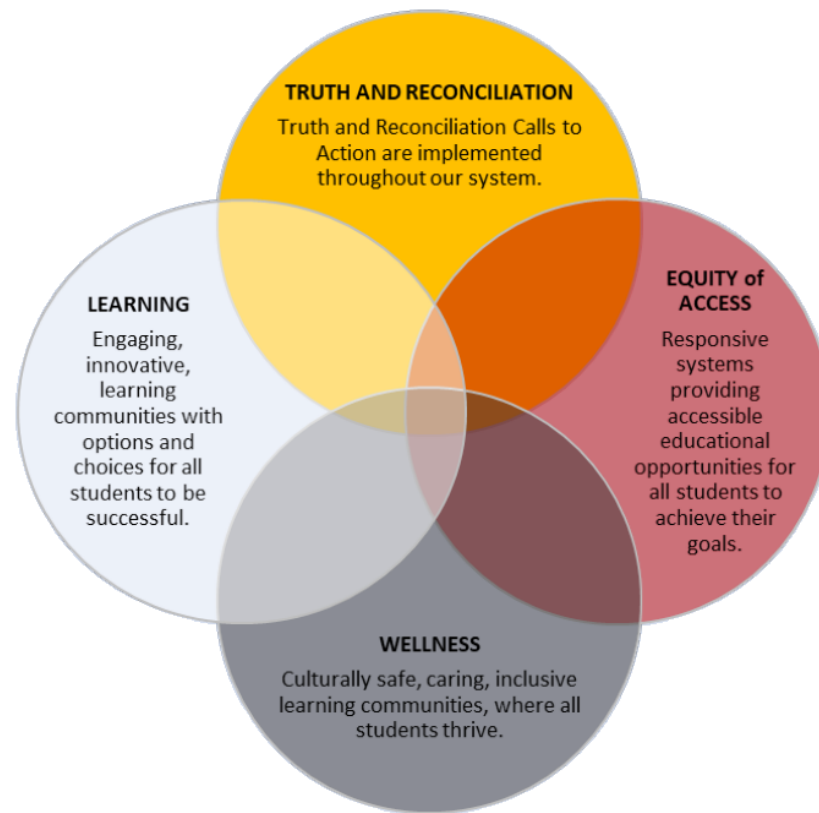
We respectfully acknowledge the unceded ancestral lands of the Lheidli T'enneh, on whose land we live, work and play.

“When you acknowledge the land, you are making a commitment to the day. The commitment and agreement to honour and respect each other and your environment.”

~Dr. Dustin Louie

District Directions

School District No. 57 has identified 4 district directions that set our priorities for the next 5 years. These directions will guide our work.



Harwin Elementary SPSS 2022/23

Truth and Reconciliation

Truth and Reconciliation Calls to Action are implemented throughout our system.

Goal:

Ensure staff and students are working to honour and implement Indigenous ways of knowing and being in our school and community.

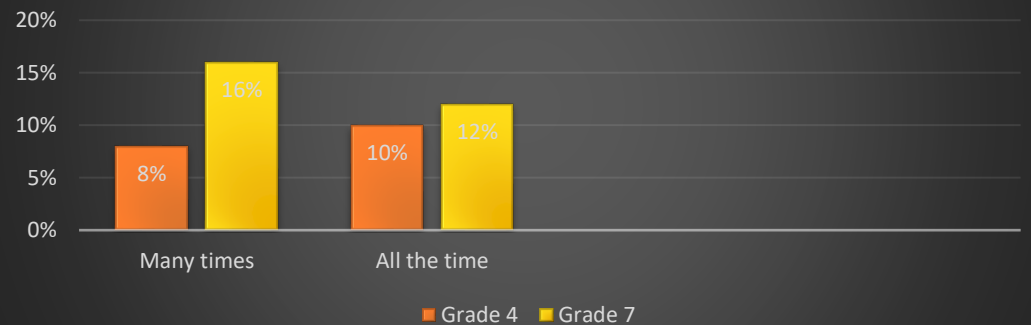
Strategies

- Explicit/increased teaching of Lheidli T'enneh history, language and culture
- Provide professional learning to staff and students about Truth and Reconciliation Calls to Action
- Increase land-based learning opportunities
- Apply for an Indigenous Learning Team Grant to learn about how Indigenous cultures intertwine drumming, singing and dancing into their societies' political and social construct.
- Create an outdoor indigenous space where students, staff and local communities can gather and learn.

Success Measures

- Student Learning Survey administered at grades 4 and 7 to measure the % of students identifying that they are learning about Indigenous culture, history and language in schools.
- Capture cultural experiences through a visual data collection.

Percentage of students learning about Indigenous culture, history, and language
Grades 4 and 7



Harwin Elementary SPSS 2022/23

Equity of Access

Responsive systems providing accessible educational opportunities for all students to achieve their goals.

Goal:

To create inclusive learning environments where all students have access to supports to improve their learning.

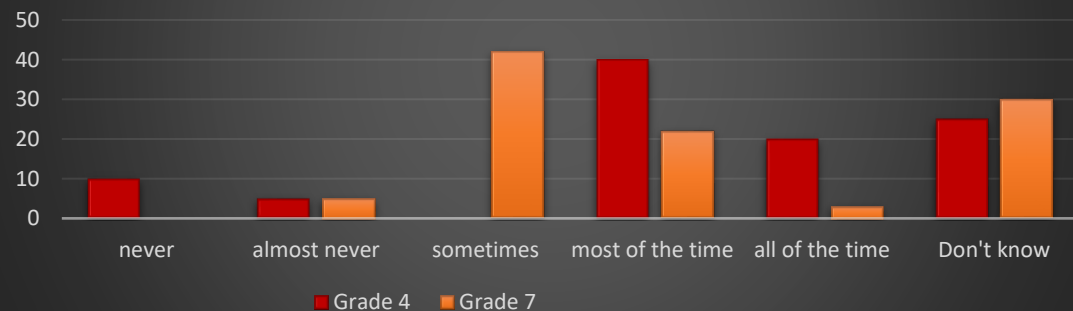
Strategies

- Increase our communication with students and families while developing personalized learning supports to remove barriers for their success.
- *Increased engagement with appropriate Indigenous resources and increased Elder and Knowledge Holders involvement to support and mentor staff in the education of Indigenous cultures.*
- *Build a diverse support network for our learners*
- *Continue to develop a pre-Kindergarten program to assist students and families with a smooth transition into school.*

Success Measures

- *Our Student Learning Surveys for our Grades 4 and 7 students help us identify a sense of belonging for our students. When students are connected and feel like they belong, they are successful.*
- *Parent conferences to discuss personal learning supports.*

Percentage of students who can get the help they need from the adults at Harwin
Grades 4 and 7



Harwin Elementary SPSS 2022/23

Wellness

Culturally safe, caring, inclusive learning communities, where all students thrive.

Goal:

Enhance the number of students who feel valued, connected, and that they belong at Harwin.

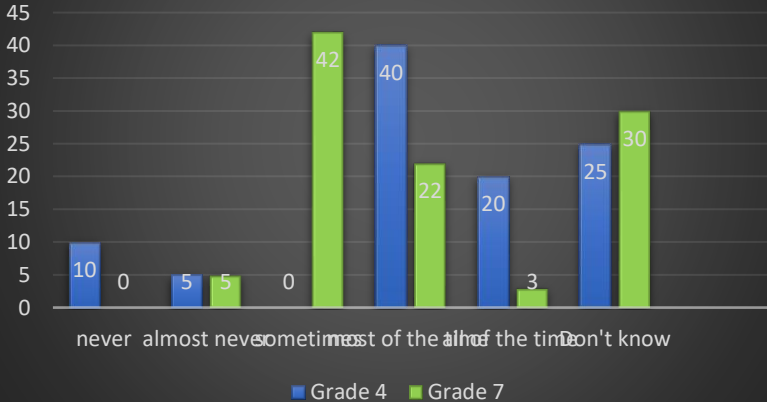
Strategies

- Provide opportunities for Sharing and Restorative Circles for staff, students, and the community.
- Participate in groups to foster growth and skill development in self-regulation, peer relationships, and conflict resolution.
- Increase the number of students participating in afterschool clubs.
- Enhance leadership and mentorship opportunities for students.

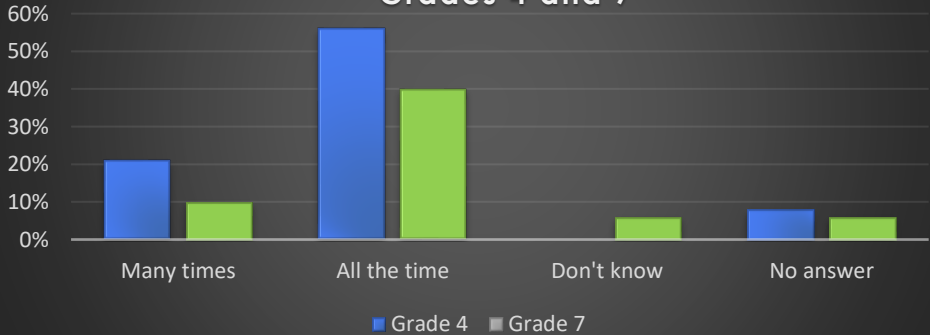
Success Measures

- Student Satisfaction Survey

Percentage of students who have 2 or more adults who care about them Grades 4 and 7



Percentage of students who have a sense of belonging at Harwin Grades 4 and 7



Harwin Elementary SPSS 2022/23

Learning

We will work to achieve engaging, innovative, learning communities with options and choice for all students to be successful.

Goal: Literacy

Increase reading and comprehension success for all students.

Strategies

- Increase use of formative assessments to inform practice and provide appropriate next steps in learning.
- Increased use of intervention strategies to meet the individual needs of the students.

Success Measures

- Increased performance demonstrated from the Fountas and Pinnell Benchmark Assessment System – three times/year.
- Increased performance demonstrated from the Foundation Skills Assessment – Grades 4 and 7.

