

WESTWOOD SCHOOL PLAN 2022- 2023

GOALS, STRATEGIES, AND OBJECTIVES



We respectfully acknowledge Westwood Elementary resides on the unceded, ancestral lands of the Lheidli T'enneh First Nations where it is an honour to walk alongside indigenous communities in educating students.

Our Vision:

All students are prepared for each step of their life’s journey with the skills, knowledge, options, and choices to be successful.

Our Mission:

Through innovation, high standards, and culturally responsive care, we nurture and empower all students where they are to be proud, confident, and engaged lifelong learners.

Our Values:

First Peoples Principles of Learning are integral in all we do.

- Learning ultimately supports the well-being of the self, the family, the community, the land, the spirits and the ancestors.
- Learning is holistic, reflexive, reflective, experiential, and relational (focused on connectedness, on reciprocal relationships, and a sense of place).
- Learning involves recognizing the consequences of one’s actions.
- Learning involves generational roles and responsibilities.
- Learning recognizes the role of indigenous knowledge.
- Learning is embedded in memory, history and story.
- Learning involves patience and time.
- Learning requires exploration of one’s identity.
- Learning involves recognizing that some knowledge is sacred and only shared with permission and/or in certain situations.

Community

We engage all members of our learning community through open and respectful relationships.

Integrity

We are ethical, fair and follow through on our commitments.

Inclusion

We ensure all students contribute and participate in all aspects of school life.

Transparency

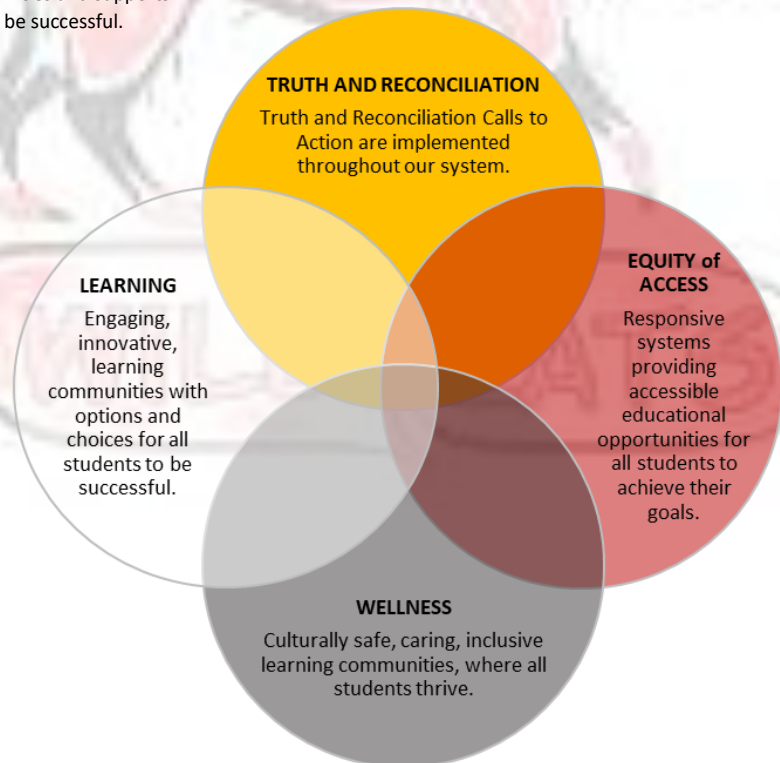
We are open, honest and accountable for the decisions we make.

Respect

We demonstrate kindness and care for ourselves, others and the environment.

Equity

We create systems where every student has opportunities and supports to be successful.



About our School:

Westwood Elementary resides on the unceded ancestral lands of the Lheidli T'enneh First Nations. It is within walking distance of the CN Centre, Prince George Aquatic Centre, PG Tennis Club, Prince George Secondary School, OVERhang Outdoor Centre, and several parks and green spaces. Westwood enrolls 200 students representing a wide variety of cultures and employs 26 staff including 9 classroom teachers, a counsellor, teacher librarian, 3 experienced Support Teachers, Education Assistants, a Senior Secretary, 2 Custodians, a Youth Care Worker, Community School Coordinator, an Indigenous Education Worker, and a Principal.

In order to transform student learning, all of the Westwood staff believe students must feel safe and confident, both socially, emotionally, and academically. For this reason, they strive to meet every student's needs, so they feel welcome, supported, and confident in the school community.

School Plan Engagement Process:

Our school community is currently evaluating our school goals and engaging our students, staff, and the parent/guardian community in this process is vital. As a result, we have begun the process of collecting feedback to help guide decision making and ensure all voices are heard and represented. We will continue the engagement process throughout the 2022/2023 school year and will revisit our established goals in January 2023 and June 2023.

District Directions:

Our District has recently undergone an engagement and feedback process with the intention of developing a new Strategic Plan. Through that process, 4 directions were identified as priorities over the next 4 years. These overarching ideas, identified below will also guide our goals at Westwood Elementary.

- ♦ **Truth and Reconciliation**
Truth and Reconciliation Calls to Action are implemented throughout our system.
- ♦ **Equity of Access**
Responsive systems providing accessible educational opportunities for all students to achieve their goals with a specific focus for our Indigenous learners, our children and youth in care, and our students with diverse abilities.
- ♦ **Wellness**
Culturally safe, caring, inclusive learning communities, where all students thrive with an emphasis on mental health, physical health and overall well-being for students, staff, and families.
- ♦ **Learning**
Engaging, innovative, learning communities with options and choice for all students to be successful. The focus of increasing literacy, numeracy and graduation rates will be prioritized. Specific strategies will be implemented to support our Indigenous learners, our children and youth in care and our students with diverse abilities.

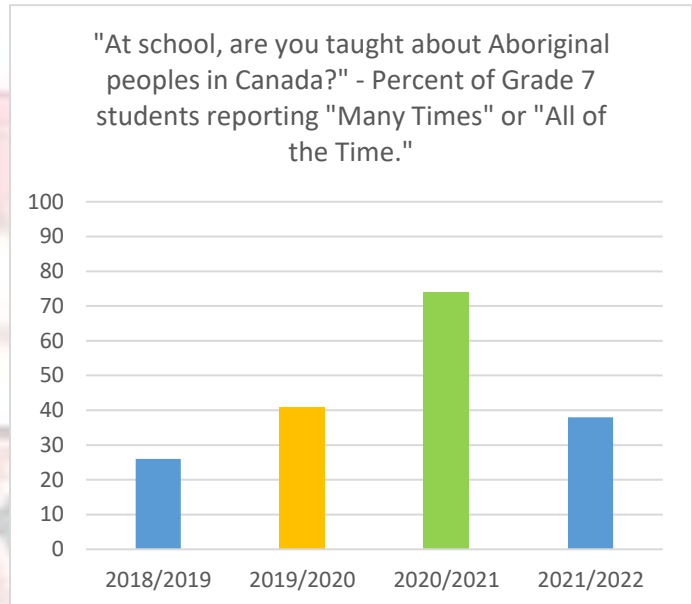
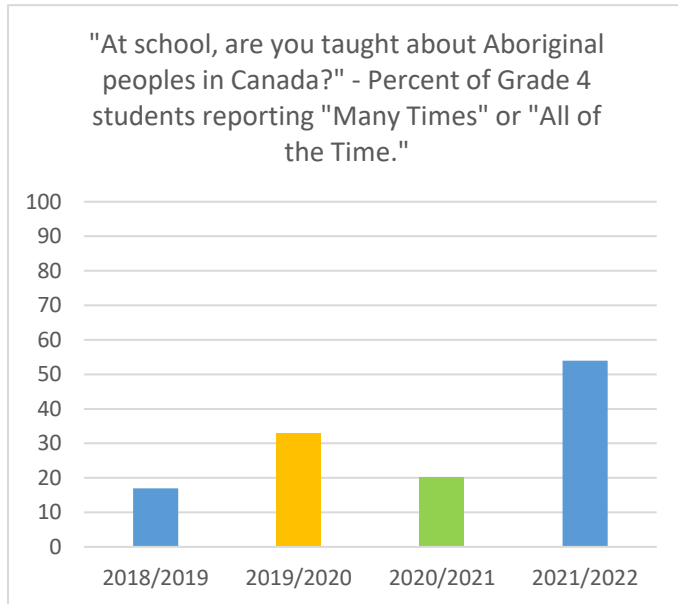
In September, students, staff, and the parent/guardian community were asked to review the District Directions, previous FSA results, and the information collected from last year's Student Learning Survey. They were then asked to answer the following questions: What is Westwood currently doing to address the 4 district directions, what current practices could Westwood improve upon to support each of the 4 directions, what does Westwood need to start doing to address each of the 4 directions, and what should be included in a school goal around each of the 4 directions. This engagement process has allowed Westwood to adjust previous goals that align with the District Strategic Plan and the current needs of the school.

Truth and Reconciliation

We are continuing our journey to address the Truth and Reconciliation Commission of Canada's Calls to Action for Education. Westwood is committed to realizing call to action 63(1), instruction and learning resources on Indigenous history and the legacy of residential schools.

- ✚ **Goal: Increase the number of students who feel connected to their culture and identity, with a specific focus on Indigenous students.**

Current Progress:



Strategies:

The strategies Westwood will use to achieve the above goal include:

- ◆ Increase staff understanding of the Truth and Reconciliation Committee's Calls to Action.
- ◆ Explicit teaching of Lheidli T'enneh history and culture.
- ◆ Explicit teaching of Indigenous peoples' history and culture in Canada and British Columbia.
- ◆ Explicit teaching of the Dakelh language.
- ◆ Increase the number of Elders and knowledge holders in the school.
- ◆ Increase land-based learning opportunities (utilize green spaces around our school: Ginter's Trails, Byng Park, etc).
- ◆ Teacher professional growth plans to support Standard 9 of the Professional Standards for BC Educators.

Success Measures:

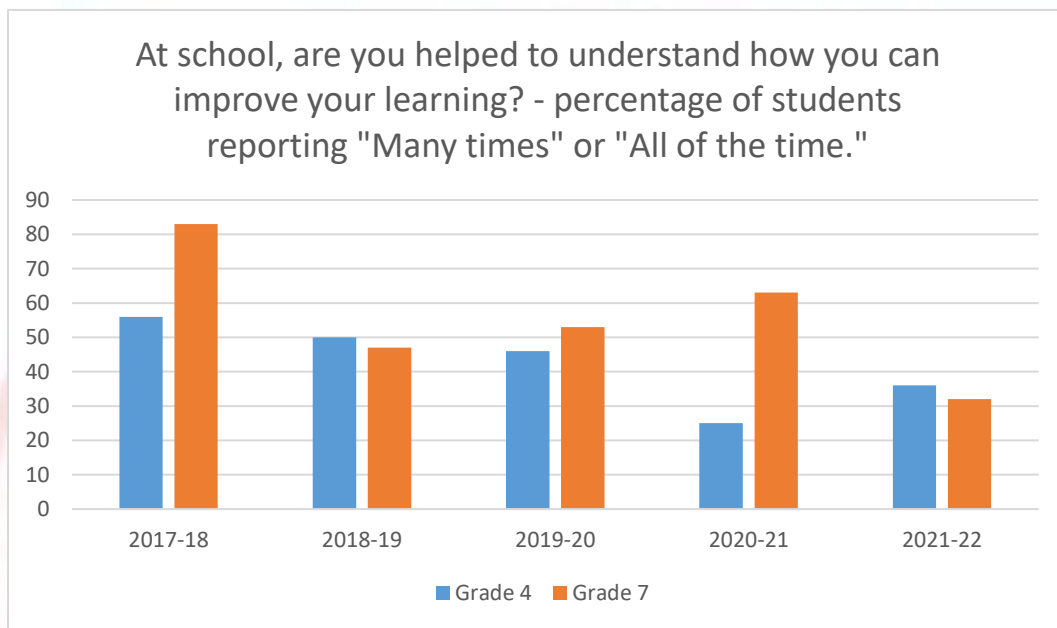
To measure Westwood's progress, we will look to our Student Learning Surveys, administered in Grades 4 and 7, to measure the percentage of students identifying they are learning about Indigenous content in schools. We want to see an increase of 10%, or higher, of students reporting they are learning about Indigenous and First Peoples in Canada within the 2022-2023 school year.

Equity of Access

We acknowledge and appreciate the unique learning profile of each student we have the privilege of working with. It is our responsibility to ensure all students have access to quality educational opportunities with diverse supports to meet each student's needs.

- ✚ **Goal: Create learning environments that are accepting, valuing, respectful, supportive, safe and secure so students feel invested in the pursuits of learning and excellence without fear of threat, humiliation, danger or disregard and despite their life circumstances.**

Current Progress:



Strategies:

The strategies Westwood will use to achieve the above goal include:

- ◆ Follow the Continuums of Support to benefit the learning of all students implementing universal supports for all, targeted supports for some, and collaborating and consulting with district support personnel for the few.
- ◆ Build a diverse support network for learners.
- ◆ Accessing community partners to ensure students are not marginalized.
- ◆ Increase opportunities for parents/guardians to have regular input in their children's education.
- ◆ Continue to identify systems and structures that are not equitable and adjust or create systems and structures of equity.
- ◆ Clarify and communicate our process for addressing racism and discrimination within our system.
- ◆ Review curriculum to Indigenize with local content and decolonize to allow academics to be learned through a cultural and inclusive lens.
- ◆ Continue to develop District Learners Supports to provide alternative learning opportunities for students to personalize their learning paths.

Success Measures:

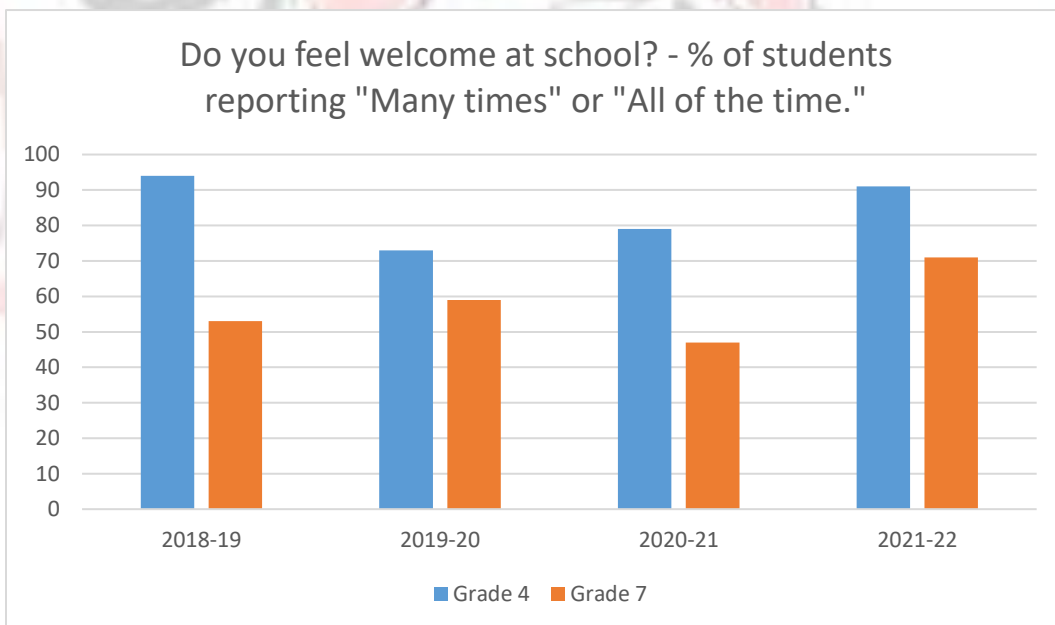
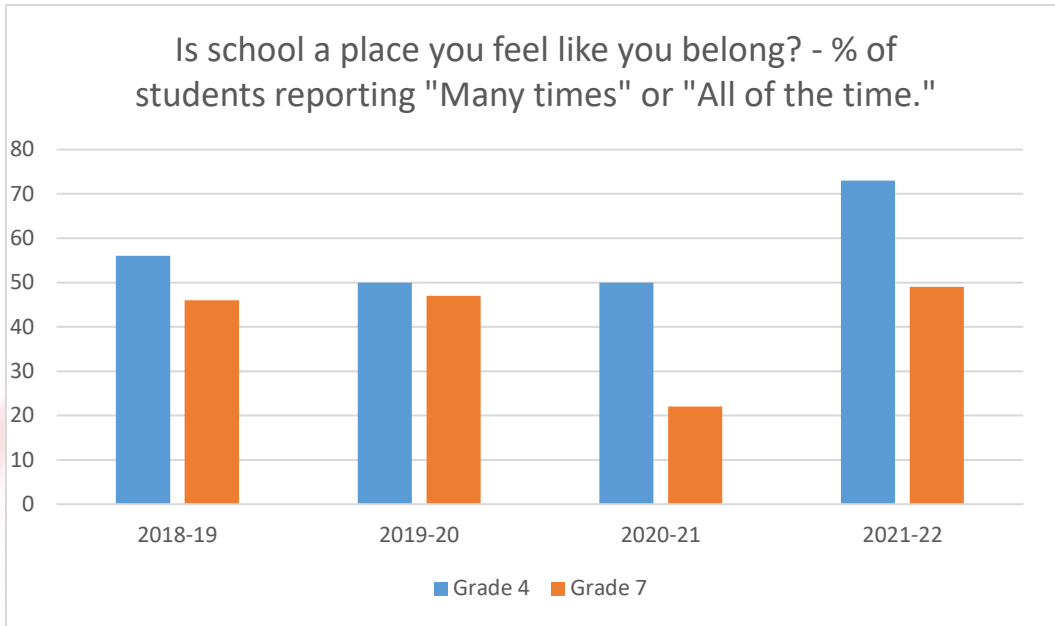
To measure Westwood's progress, we will look to our Student Learning Surveys, administered in Grades 4 and 7, to measure the percentage of students identifying how they understand how they can improve their learning. We want to see an increase of 10%, or higher, of students reporting they understand how to make improvements within the 2022-2023 school year.

Wellness

Safety, social-emotional support, and culturally sensitive, and inclusive learning environments are critical for students to feel safe and confident in our school community. Providing all learners with mental health supports is essential to increasing the success of students.

- ✚ **Goal: Enhance mental health literacy with a focus on its implementation so students feel safe, confident, and establish a sense of belonging in our learning environment.**

Current Progress:



Strategies:

The strategies Westwood will use to achieve the above goal include:

- ♦ Offer a diversity of programming so students can find an avenue for self-confidence and sense of belonging through various experiences.
- ♦ Work with community partners to provide valuable teaching around Mental Health and strategies.
- ♦ Communication with families to discuss needs of individual students.
- ♦ Focus on relationships within our school to ensure all students have adults they trust and know care for them.
- ♦ Provide instruction for Mental Health Literacy to staff and students (ie. Open Parachute).

Success Measures:

Our Student Learning Surveys for the Grades 4 and 7 students provide us with insight regarding how they feel about themselves and how they feel in our school community. Ensuring students feel connected and have a sense of belonging is critical in ensuring students are successful. Our goal is to see a 10% increase in students developing a sense of belonging, as well as feeling welcome in our school.

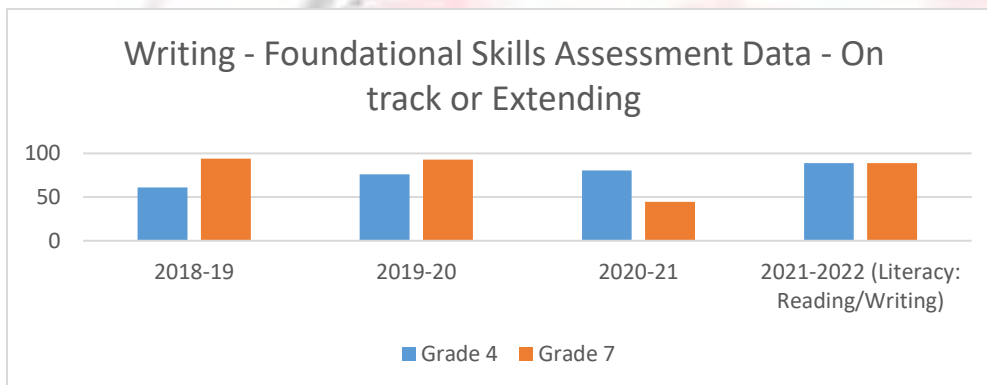
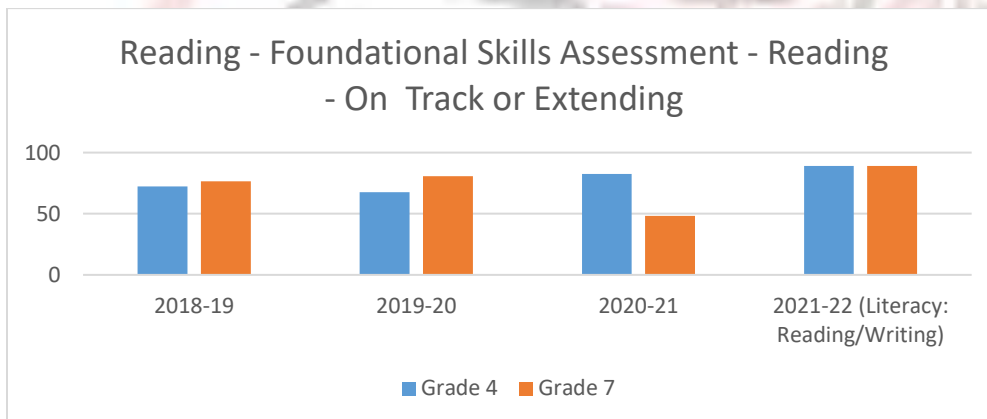
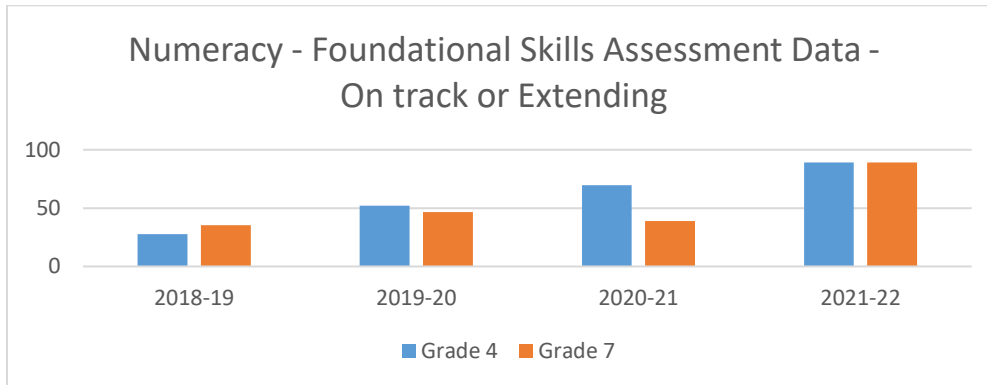


Learning

We will work to achieve innovative and exciting learning opportunities with options and choices for all students to be successful. We plan to focus on numeracy and literacy at all levels to ensure learners are accessing the knowledge they need to be successful in life.

- ✚ **Goal: We will increase numeracy and literacy rates for all students and close the gap for Indigenous learners, children and youth in care, and students with diverse abilities.**

Current Progress:



Strategies:

The strategies Westwood will use to achieve the above goal include:

- ♦ Focus on data conversations so that the data we collect informs our actions in the school.
- ♦ We will continue to evaluate our support systems and structures to ensure the way we are implementing our supports are making a positive difference for our learners.
- ♦ Support continued work on looking for evidence of learning in multiple ways.
- ♦ Review resources and instruction to Indigenize with local content and decolonize to allow academics to be learned through a cultural and inclusive lens.
- ♦ Administer the district numeracy assessment at each grade level to monitor students' progress.

Success Measures:

To monitor our progress, Westwood will look to the Foundation Skills Assessment and classroom based assessments.

Summary:

Westwood will adjusted the goals and strategies at various points during the school year to reflect the needs of the students. Discussing progress and ensuring the systems and supports we have in place is an essential part of improving success for students. Staff, Students and Parents/Guardians will review the school plan in January 2023 and again in June 2023.

